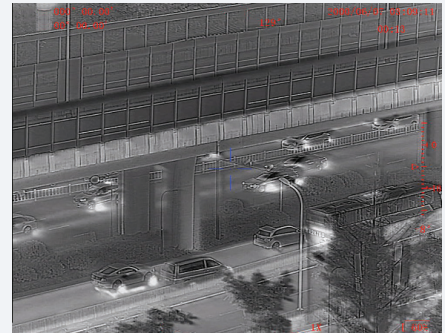


# SENTINEL SMLRF

Multi-Functional LONG RANGE THERMAL BINOCULAR



Display

The SENTINEL SMLRF is the most effective handheld multi-functional thermal laser rangefinder binocular available. It serves a wide variety of tactical, law enforcement, border security and special forces applications. SENTINEL SMLRF binoculars use a high-resolution uncooled thermal sensors to perceive differences in the thermal signature of objects within the field of view. The unit can detect objects at remote distances 24 hours a day, through smoke, fog or camouflage. The unit's eye-safe laser rangefinder and digital magnetic compass instantly measure distance, azimuth and inclination of far-off targets. Data is displayed inside the field of view and can be exported via the computer output to a variety of peripheral devices.

<b>Infrared sensor (LWIR)</b>	
Detector type	Vox
Resolution (pixels)	640 x 512
Spectrum (µm)	8-14
Pitch size (µm)	12
NETD (mK) @F1.0	<40
Frequency (Hz)	50
Objective Focal Length (mm)	50 @F1.0
Field of View (°)	8.8 x 7.0
Non-uniformity correction	Auto
Detection/Recognition of tank target (km)	6.3/1.6
Detection/ Recognition of human target (km)	2.3/0.6
Zoom	1-4x
<b>SWIR</b>	
Objective Focal Length (mm)	50
Resolution (pixels)	640x512
Frequency (Hz)	50
Field of View (°)	8.8 x 7
Zoom	1-4x
Spectrum (µm)	0.9 - 1.7
<b>LRF</b>	
Laser type	Semiconductor laser, Class I
Laser wavelength (µm)	1,550
Detection range (m)	20 - 5,000, (20 - 10,000 Optional)
Ranging accuracy (m)	±2
<b>GPS</b>	
Type	GPS, Galileo (GNSS)
Target locating error	±5M (target<1km)
Format	Lat/Long and MGRS
<b>Fusion</b>	
Combining day and thermal image	Yes
Fusion modes	At least 3 modes of image combining

# SENTINEL SMLRF

Multi-Functional LONG RANGE THERMAL BINOCULAR



<b>Magnetic compass</b>	
Azimuth resolution/accuracy	1° / 1°
Elevation resolution/accuracy	1° / 1°
Elevation range	+/- 80°
<b>Mechanics and environmental</b>	
Interpupillary distance (mm)	64
Eyepiece diopter adjustment (dpt)	±5
Internal video & photo recording	Yes
Connectivity	Power input, RS232 (remote control), USB (output videos and images), PAL video
Continuous working time (hours)	4
Dimensions with eyepiece (mm)	170 x 210 x 90
Weight without battery (kg)	Max 2kg
Power	Internal battery: rechargeable 4x18650, DC power supply 12VDC
Temperature range (°C)	-30 to +60
Storage temperature range (°C)	-35 to +65
Waterproof	MIL STD 810 (1m for 30 min)
Mechanical interface/mounts	1/4" tripod mount

## DELIVERY SET

Supplied with the following standard accessories:

- Soft carrying case
- 4x 18650 batteries
- Li-ion battery USB charger
- Hard carrying case
- Operation manual
- Multi-use cable

